

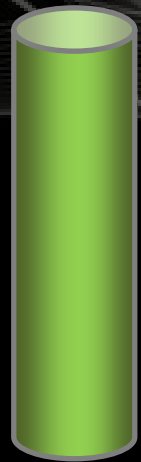
**RESISTA<sup>®</sup>**  
**SINCE 1946**



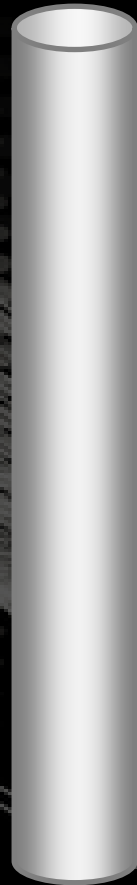
# **IL FUTURO IN IMPLANTOLOGIA**

**A MALI ESTREMI  
ESTREMI RIMEDI**

# ESTREMI RIMEDI



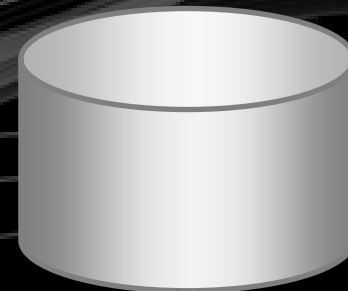
**STD**



**LUNGHI**



**CORTI**

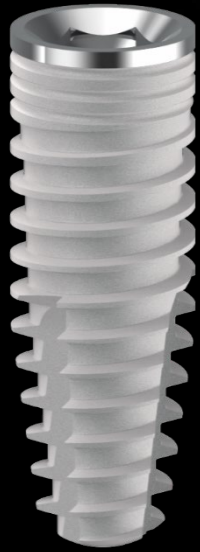


**LARGHI**

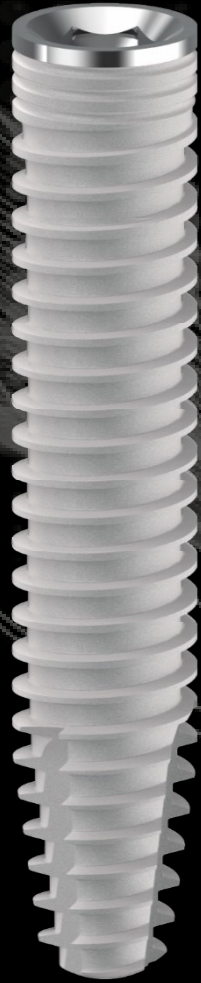


**STRETTI**

# ESTREMI RIMEDI



**STD**



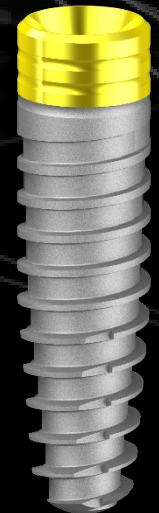
**LUNGHI**



**CORTI**

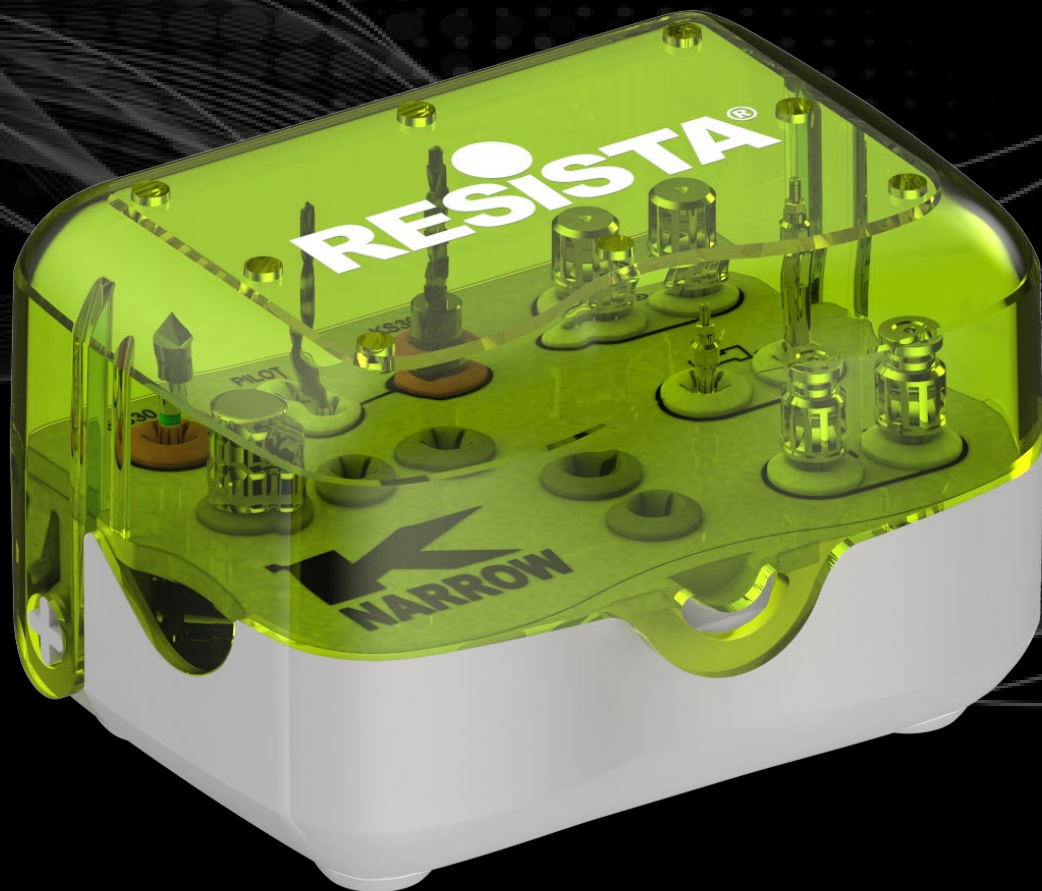


**LARGHI**



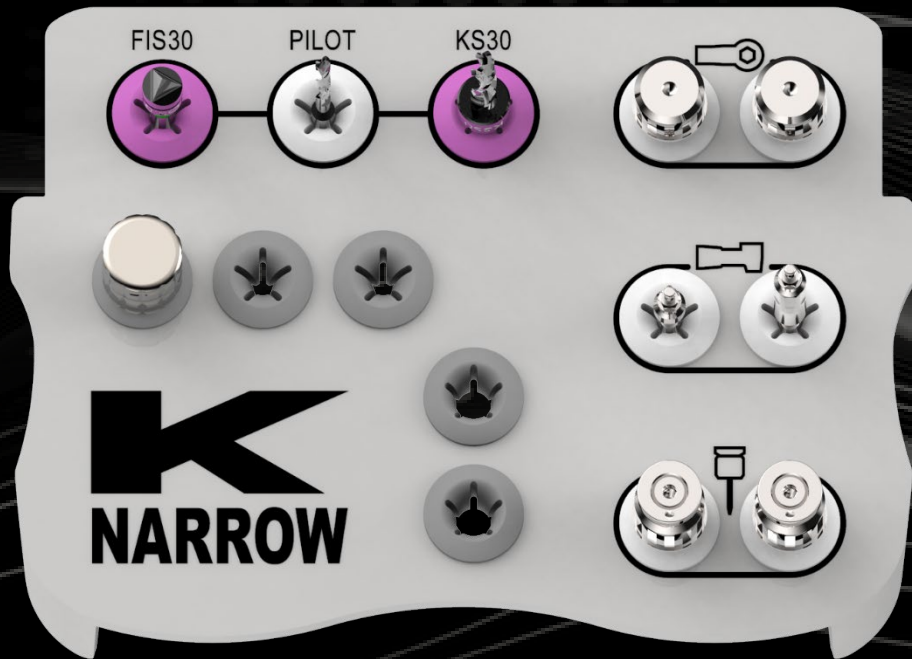
**STRETTI**

# K NARROW



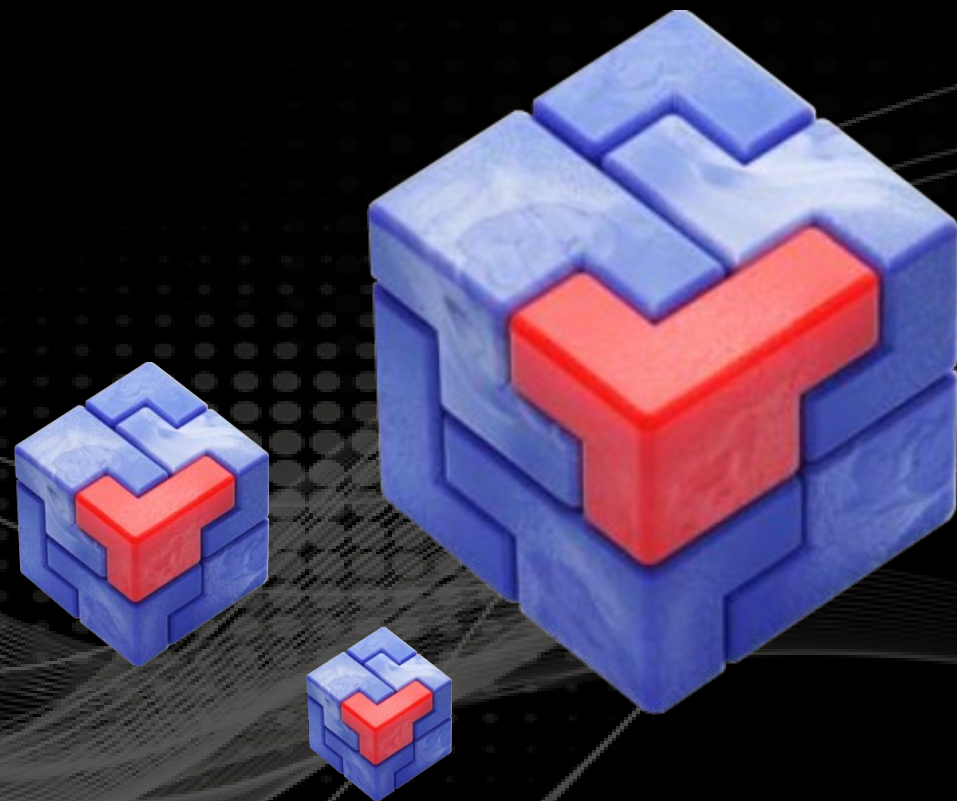
**L'ESTREMO IN UN PALMO**

# K NARROW



**KIT KN € 699.00**

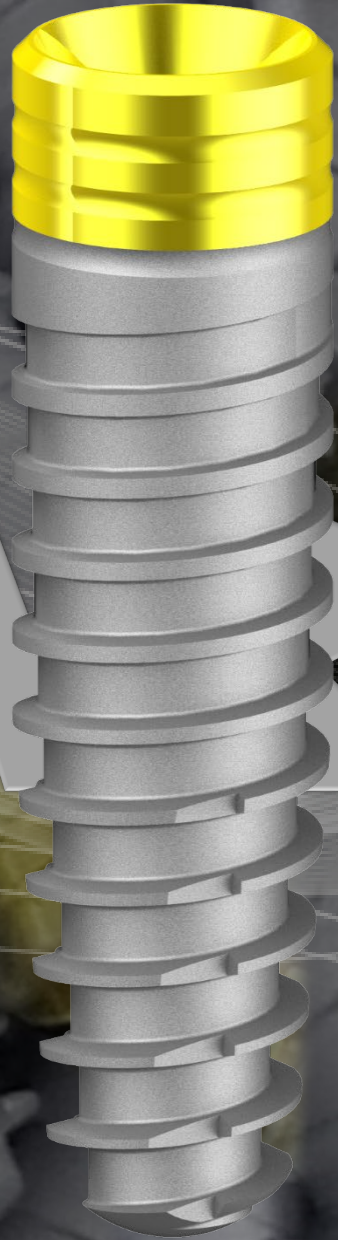
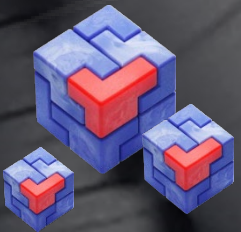
**NOI DEFINIAMO  
IL NOSTRO  
PROGETTO**



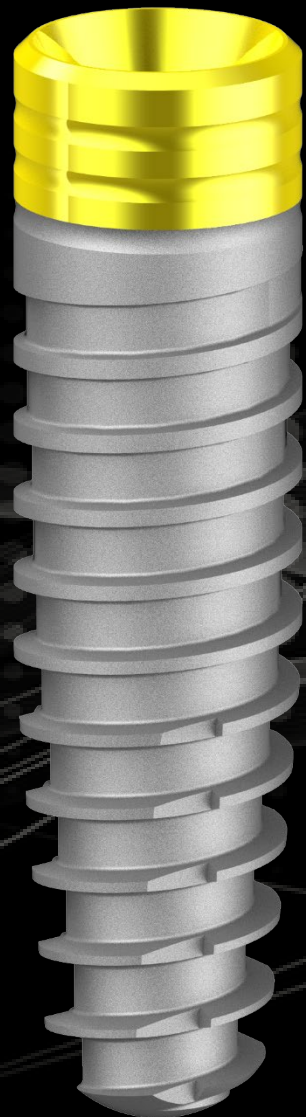
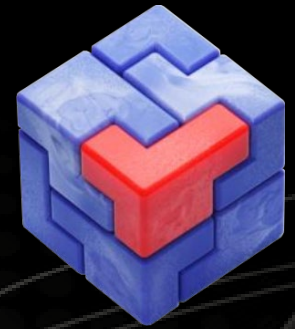
**FORTE e  
LOGICO**



**KNAUF**

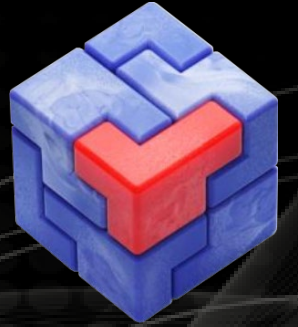


# K NARROW



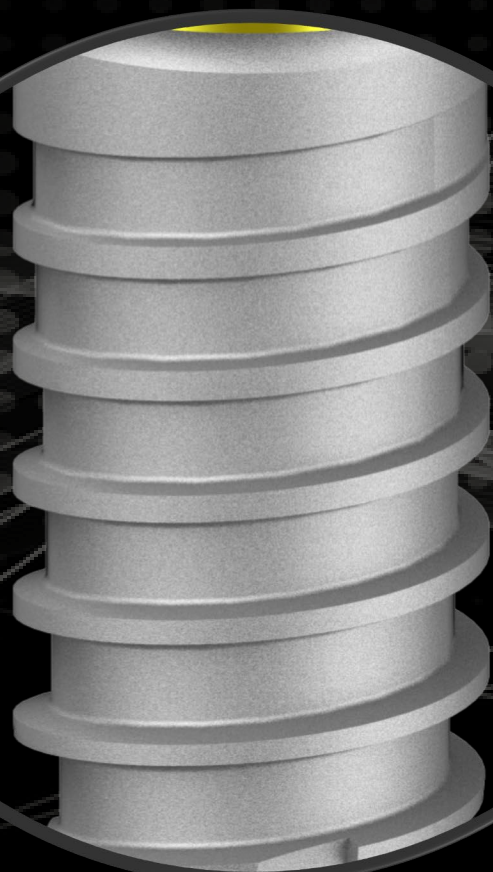
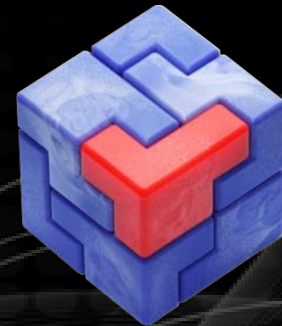
- **Impianto Ø 2.9 mm**
- **Nocciolo Ø 2.5 mm**
- **Apice Ø 1.5 mm**
- **Conicità Apicale 5mm**

# COLLO



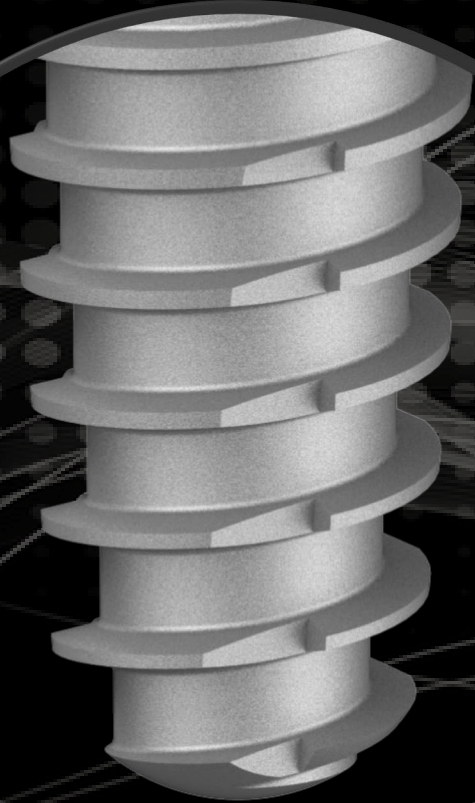
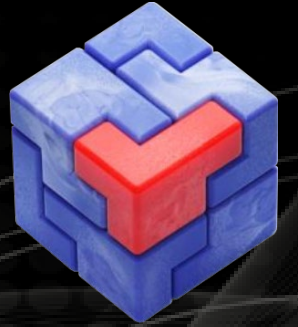
- $\varnothing$  3.0 mm
- **Macchinato Anodizzato**
- Platform Switching
- **3 Micro Treads**

# CORPO



- **Cilindrico  $\varnothing$  2.9 mm**
- **Nocciolo Conico 1.5°**
- **Nocciolo  $\varnothing$  2.5 mm**
- **Passo Spire 0.8mm**

# APICE



- **Ø 1.5 mm**
- **Conicità Apicale 5mm**
- **3 Fresature Apicali**
- **Apice Raggiato**

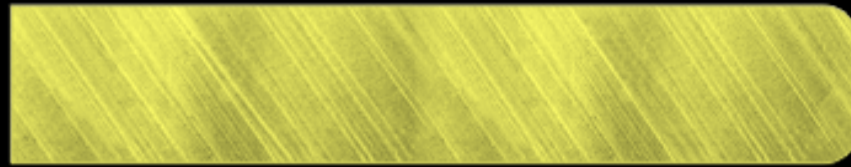


**LA SUPERFICIE IMPLANTARE  
E LA CHIMICA DI SUPERFICIE**

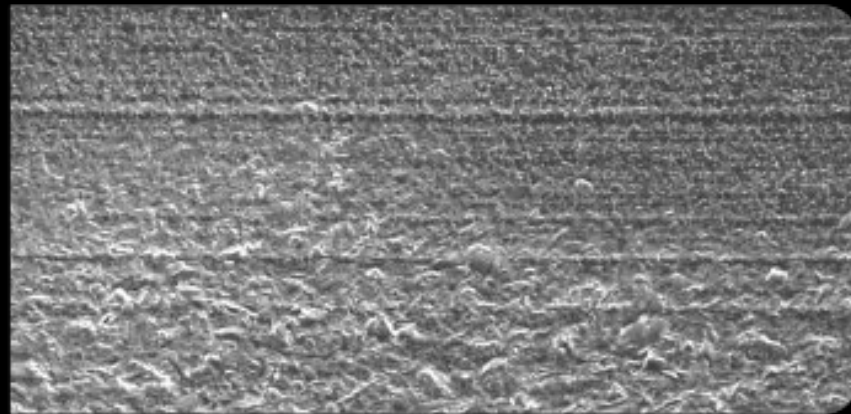
**SONO IL NOSTRO  
PUNTO DIFFERENZIANTE**

# 4 + 1 TREATMENT

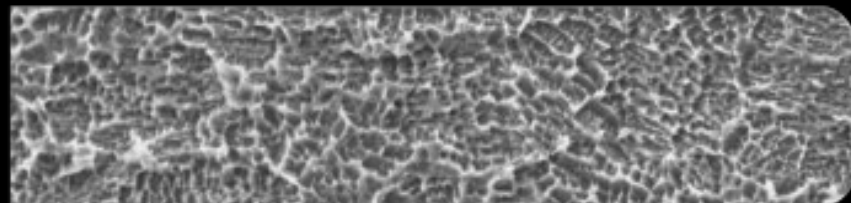
1. MACHINED + ANODIZING



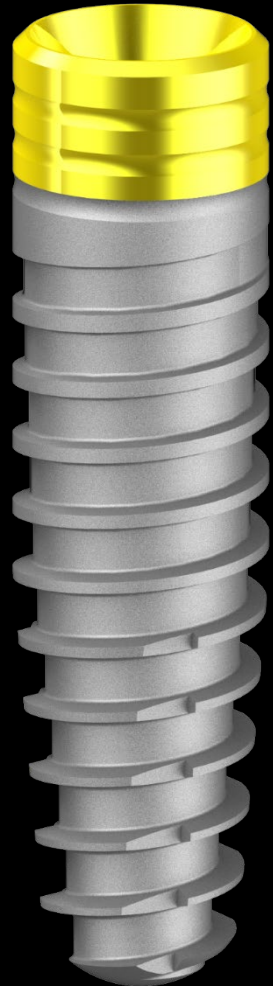
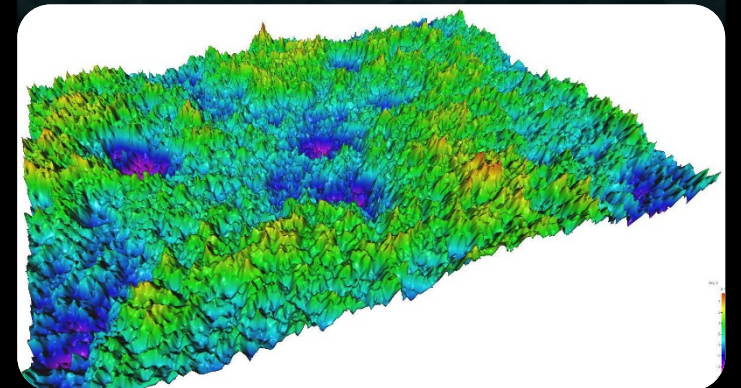
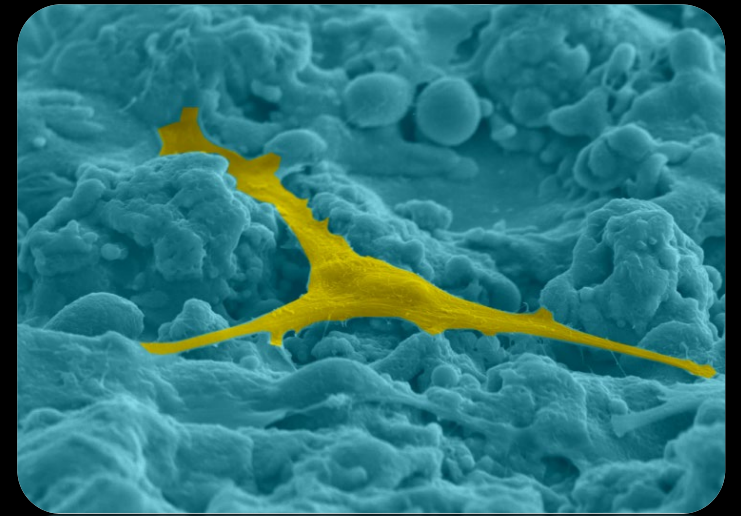
2. NANO ROUGH



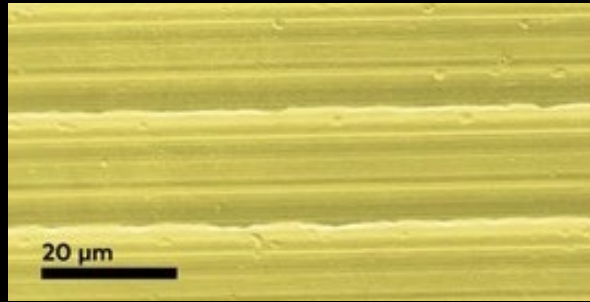
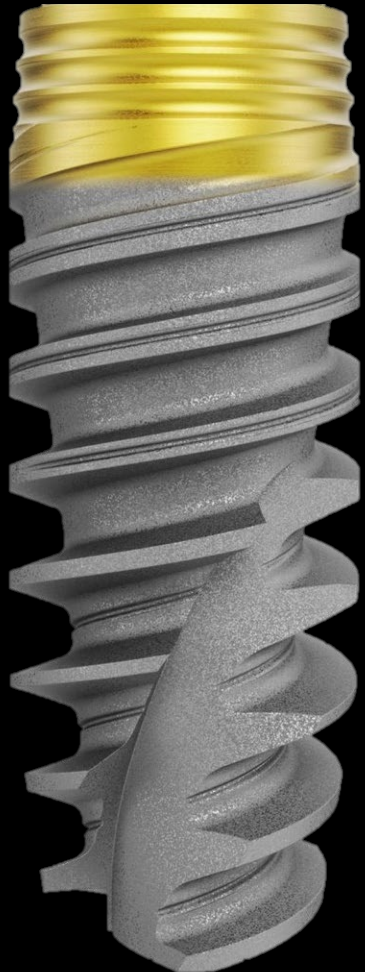
3. MICRO ROUGH 1/5  $\mu$



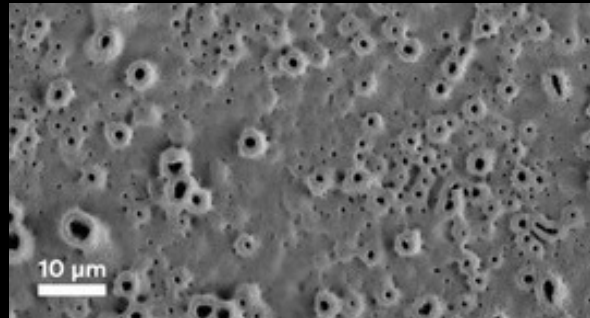
4. MICRO ROUGH 3/10  $\mu$



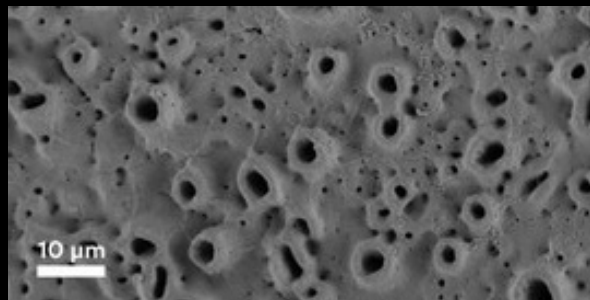
# MACHINED + ANATASIO



**MACHINED  
ANODIZZATO**



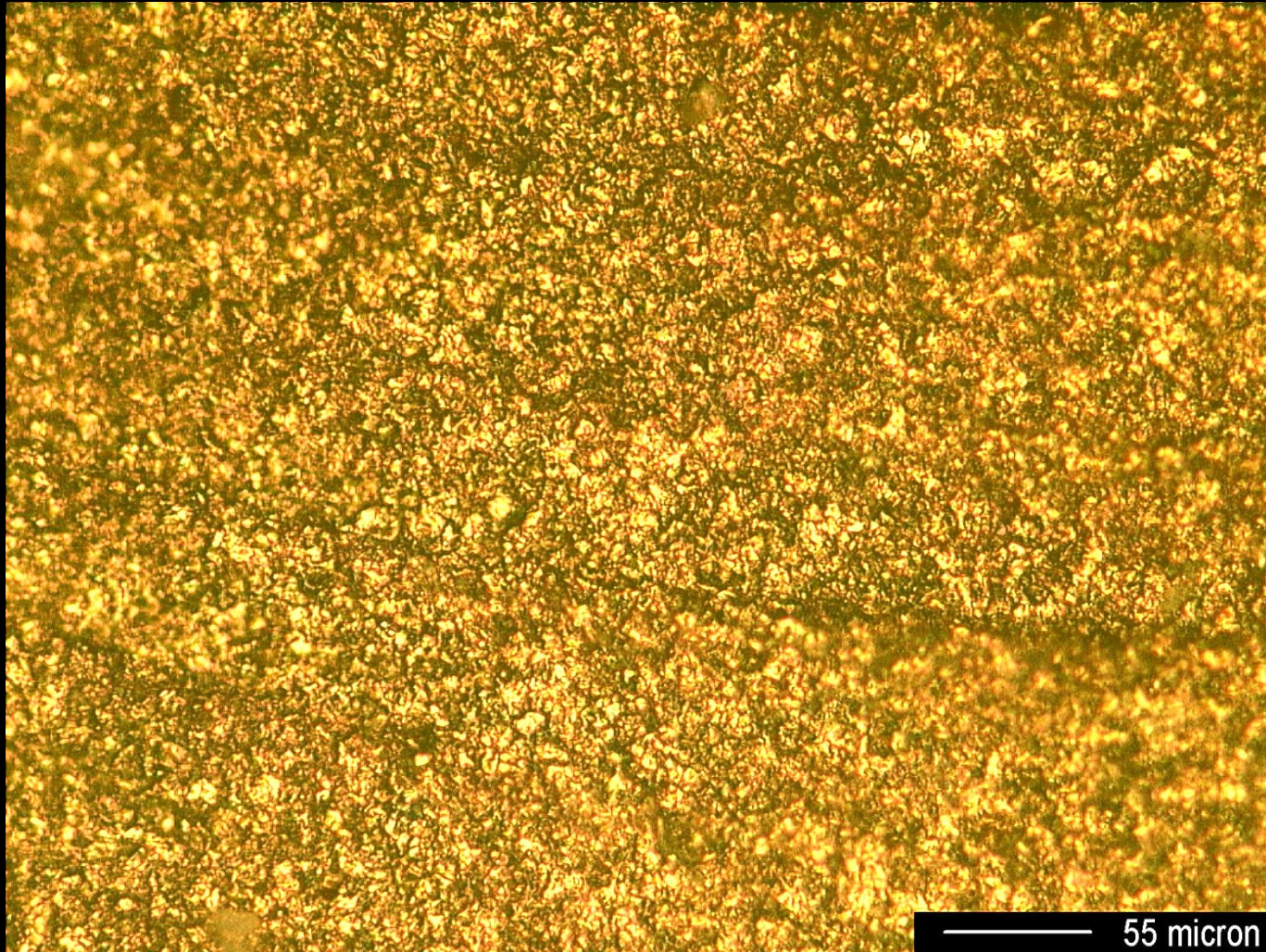
**ASD Ti Unite  
< 5μ**



**ASD Ti Unite  
> 5μ**



# MACHINED + ANATASIO



- **Minerale Naturale TiO<sub>2</sub>**  
**Anatasio - Rutilio – Brookite**
- **Cristallo Tetragonale**
- **Propr. Antibatteriche**



# CORPO

**2.50 KX**

**5.00 KX**



# PLASMA CLEANING

---



The image features a technical drawing of a screw on the left and a drill bit on the right, both rendered in white lines against a black background. The screw is shown in a perspective view, highlighting its threads and a hexagonal head. The drill bit is shown in a perspective view, highlighting its flutes and a double-flute tip. In the center, there is a grid pattern that transitions into a series of wavy, horizontal lines. The text is overlaid on this central area.

**LA QUALITÀ**

**DELLE GEOMETRIE  
AD ACCOPPIAMENTO  
MECCANICO**

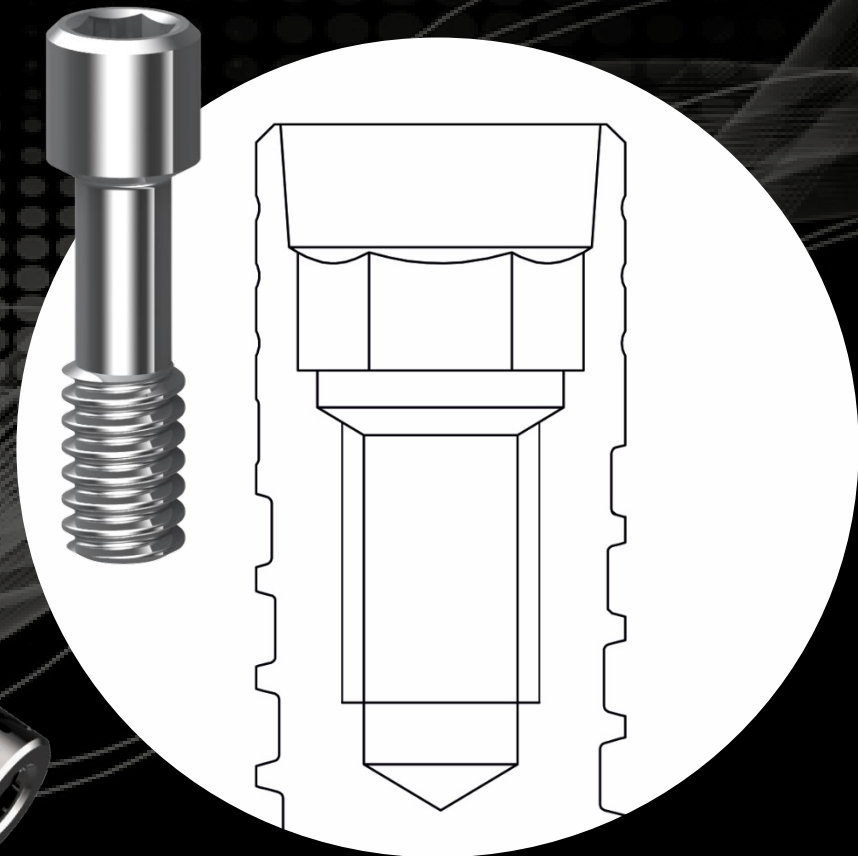
**è il nostro FOCUS  
e la nostra REGOLA**

# CONNESSIONE CONICA

4°



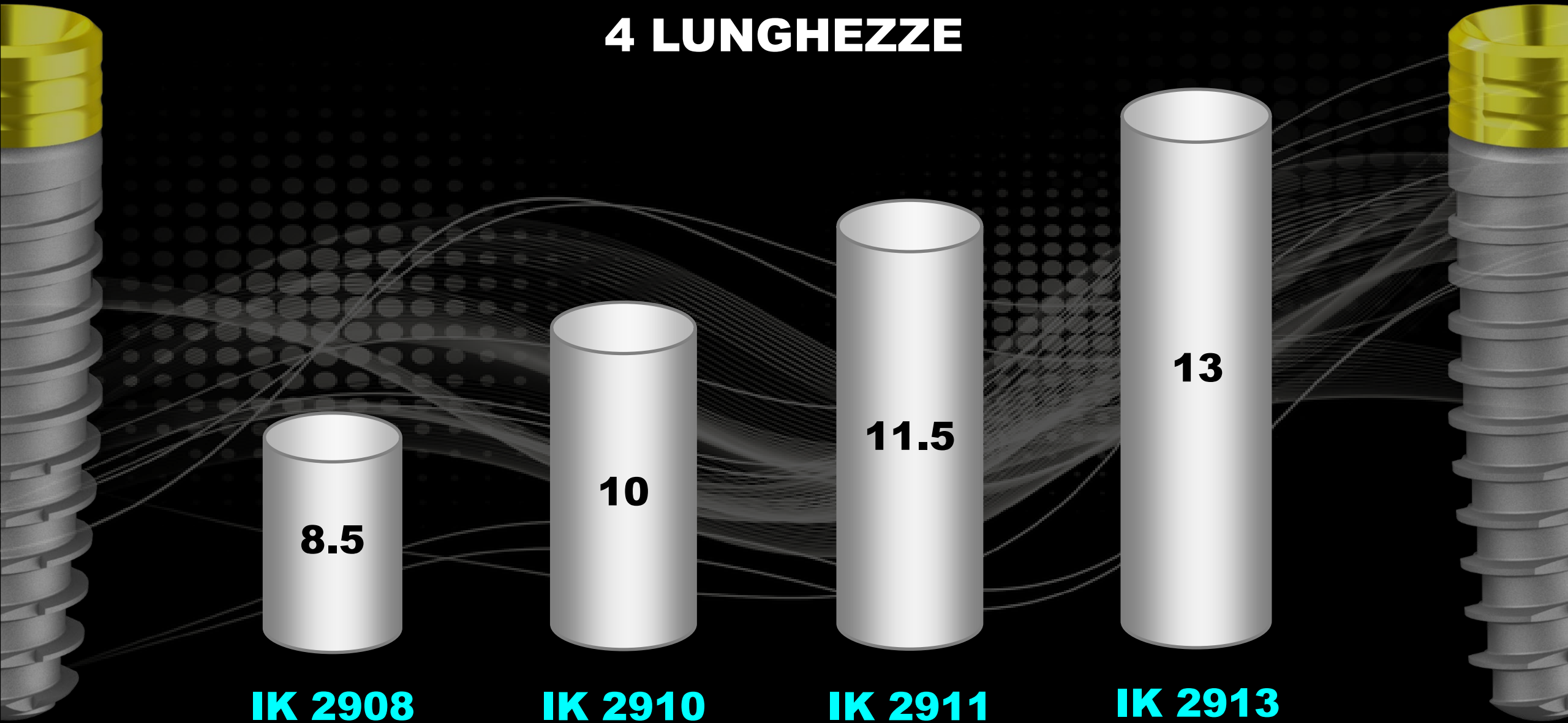
**35 Ncm**  
**MAX**



**ESAGONO 2.0 mm**  
**Vite 1.6 mm**

# IMPIANTO MOUNTERLESS

4 LUNGHEZZE



**IK 2908**

**IK 2910**

**IK 2911**

**IK 2913**

# CONFEZIONAMENTO

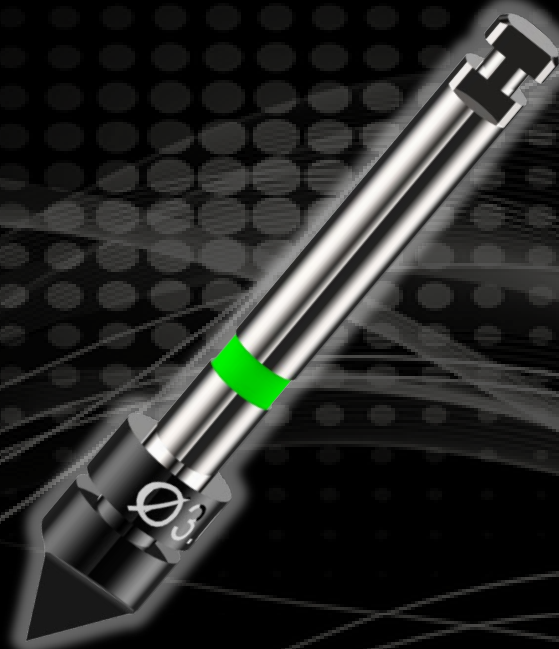


The background is a collage of surgical-related images. On the left, there's a close-up of various surgical instruments like forceps and scissors on a green tray. On the right, a surgeon in full green scrubs, a cap, and a mask is visible. The entire image has a dark teal overlay with white wavy lines and a grid pattern.

# **STRUMENTARIO CHIRURGICO**

# STRUMENTARIO CHIRURGICO

**FIS30**



**CS15**



**KS30**

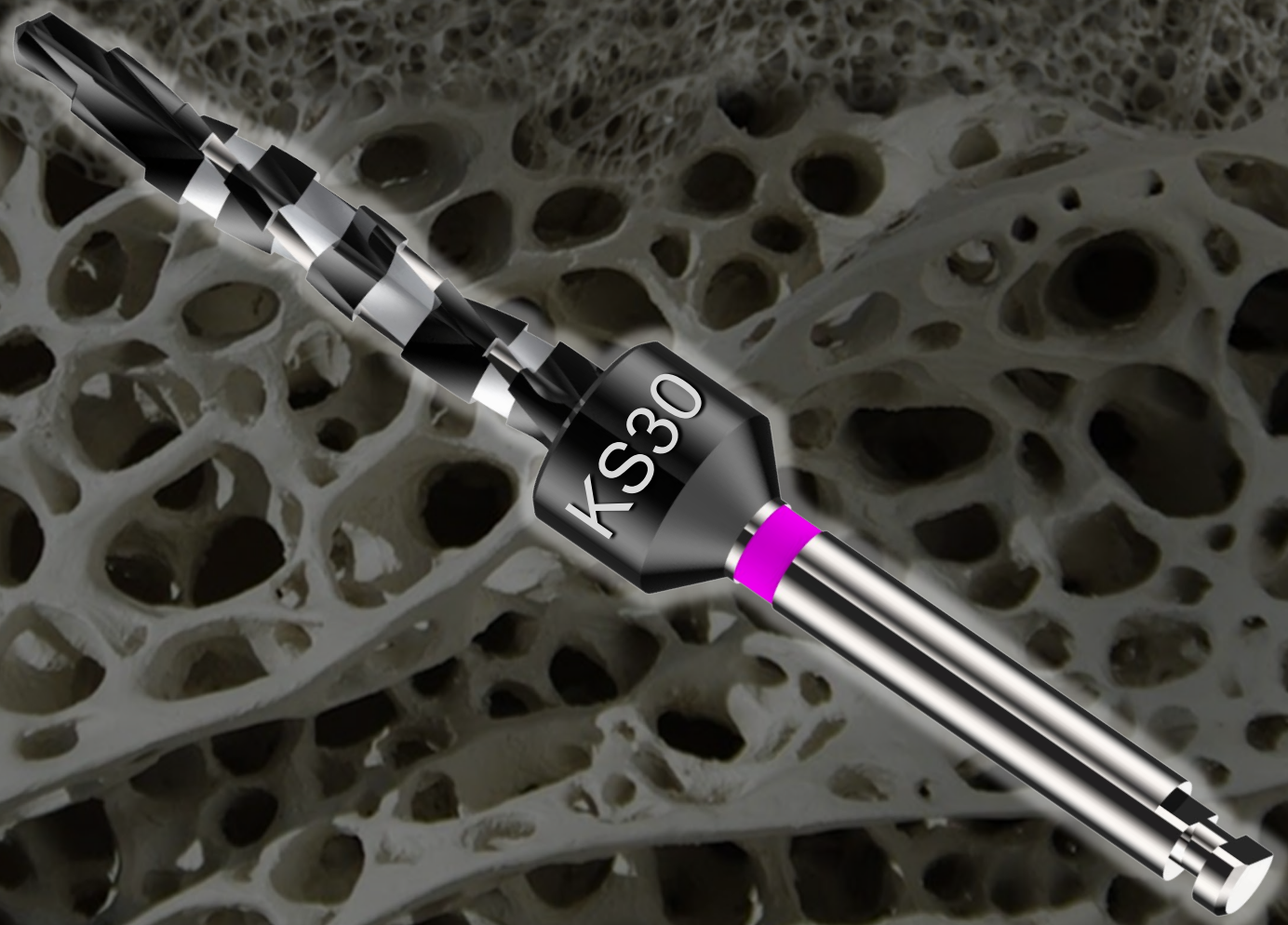


**SPALLA  
LANCEOLATA**

**PILOTA  
CILINDRICA Ø1.5**

**FINALE  
PREFORMATA Ø2.6**

# ROTAZIONE ORARIA e ANTIORARIA



# STRUMENTARIO CHIRURGICO

**ACK2 S**



**ACK2 L**



**PCK2 S**



**PCK2 L**



**AVVITATORI  
CONTRANGOLO**

**AVVITATORI  
CRICCHETTO**

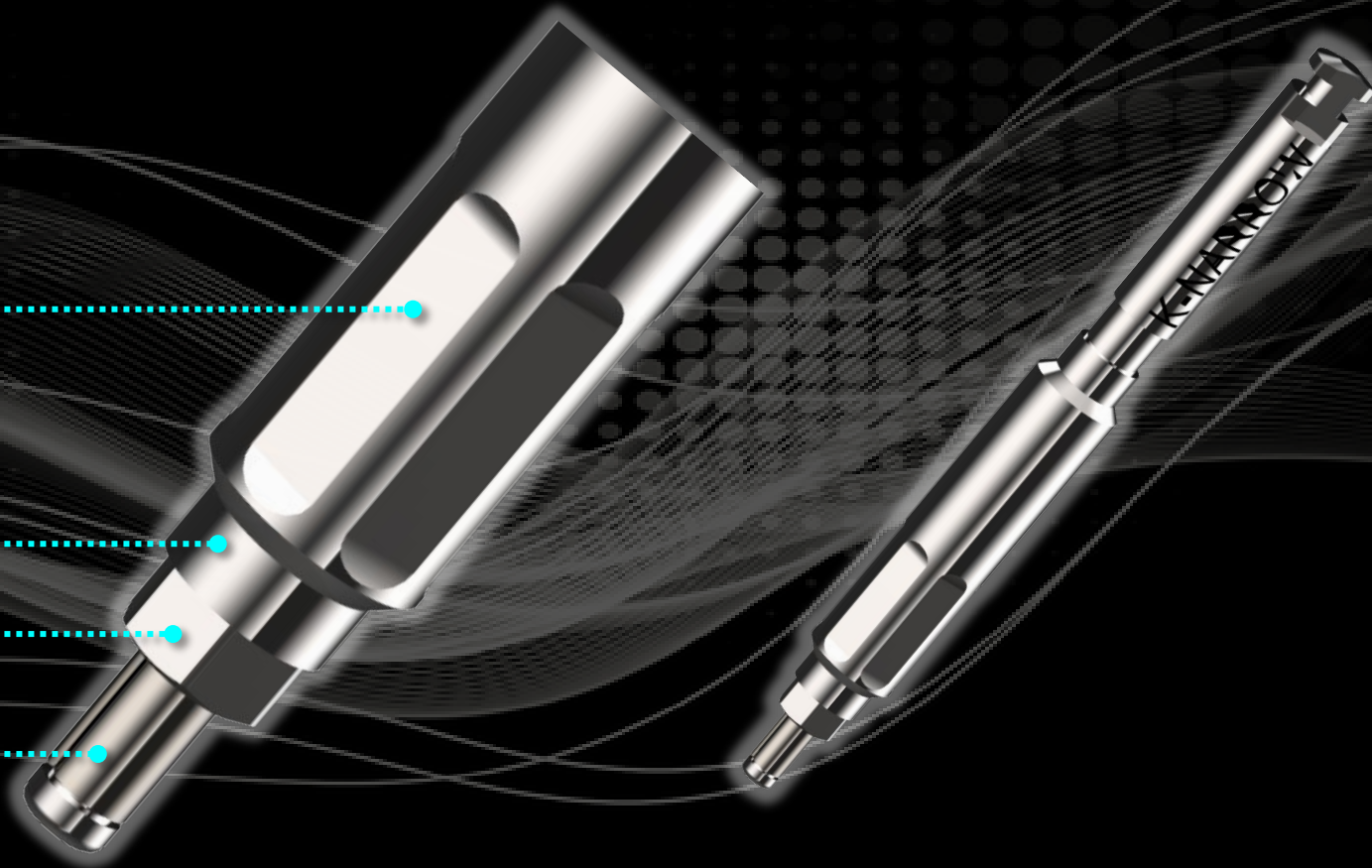
# STRUMENTARIO CHIRURGICO


**CONTROLLO FASE**

**FALSO CONO**

**ESAGONO**

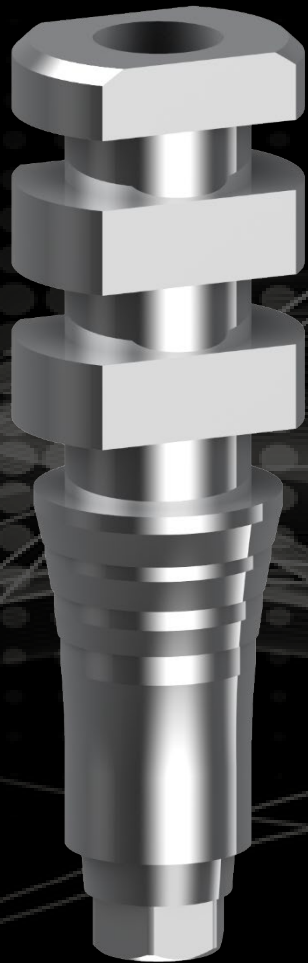
**RITENZIONE**



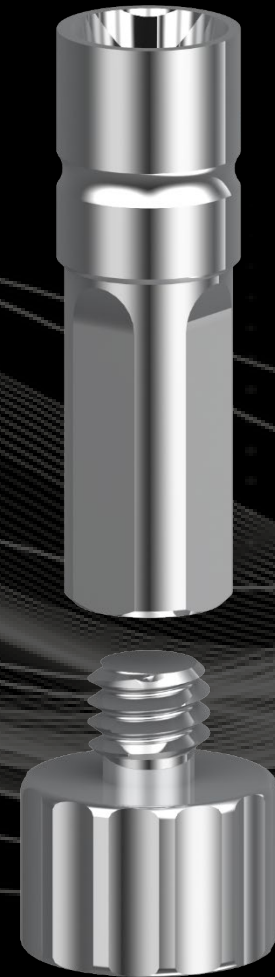


# COMPONENTISTICA PROTESICA

# COMPONENTISTICA PROTESICA



**TRANSFER  
ANALOGICO**

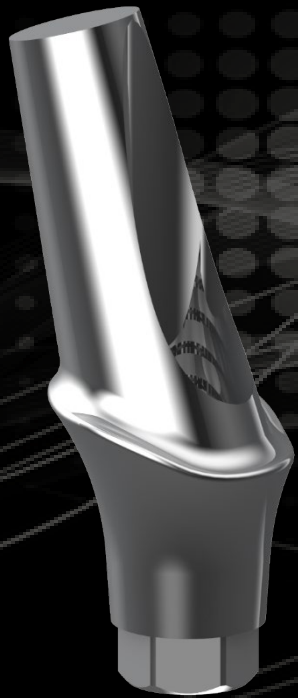


**ANALOGO  
DIGITALE**

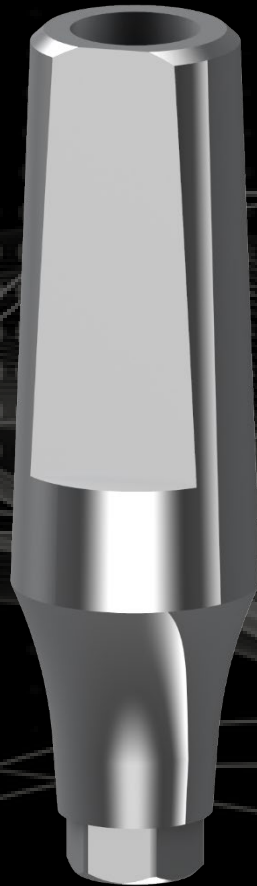


**PILASTRO  
GUARIGIONE**

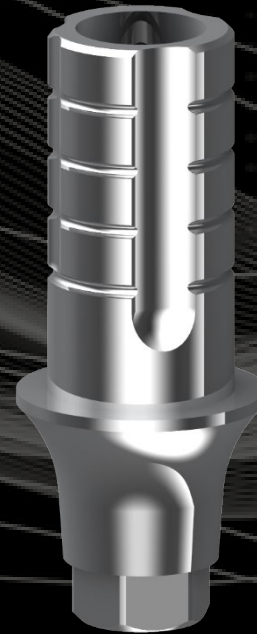
# COMPONENTISTICA PROTESICA



**TITANIO  
ANGOLATI**



**TITANIO  
DIRITTI**



**LINK  
INCOLLAGGIO**



**UCLA  
CoCr**



**PILASTRO  
EQUATOR**

# STRUMENTARIO PROTESICO

**DMRP**  
**120L**



**DMRP**  
**120S**



**ACESTR**



**DRIVERS MANUALI ES. 1.20**

**ESTRATTORE MANUALE**

# RIMOZIONE FACILITATA ABUTMENT



**DRIVERS  
MANUALI  
ES. 1.20**



**ESTRATTORE  
MANUALE**



# K NARROW



# GRAZIE

